

MasterTech Stat OG/EA Cytology Stain

Item# CYSOE

(Revised 03/08/18)

PRINCIPLE: Used for Rapid Papanicolaou Staining.

SPECIMEN: Any cytology smear fixed in 95% Reagent Alcohol or cytology fixative.

QUALITY CONTROL: American MasterTech Recommended Control Slide: Not Applicable.

PROCEDURE NOTE: If Harris or Gill's Hematoxylin is used, add differentiating and bluing steps.

PROCEDURE:

1. Hydrate slide through 2 changes of 95% Reagent Alcohol for 2 minutes each.
2. Rinse slide gently in Tap water.
3. Place slide in **MasterTech Modified Mayer's Hematoxylin** for 1 to 3 minutes.
4. Rinse slide gently in Tap water for 3 minutes.
5. Place slide in 95% Reagent Alcohol for 15 seconds with gentle agitation.
6. Place slide in **MasterTech Stat OG/EA Stain** for 2 to 4 minutes with gentle agitation.
7. Place slide in 2 changes of 95% Reagent Alcohol for 30 seconds each with gentle agitation.
8. Dehydrate slide through 3 changes of Absolute Alcohol for 30 seconds each with gentle agitation.
9. Clear slide through 3 changes of fresh Xylene or Xylene Substitute for 60 seconds each with gentle agitation.
10. Coverslip using a permanent mounting media.

RESULTS:

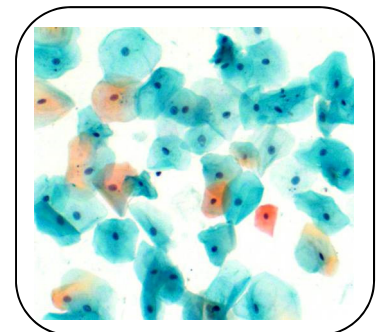
Chromatin: **BLUE**

Keratin: **ORANGE**

Superficial Squamous Cells: **Various shades of PINK**

Nucleoli, Cilia, Red Blood Cells: **Various shades of PINK**

All Metabolic Cell Cytoplasm: **Various shades of BLUE-GREEN**



Cytology Smear

REFERENCE: Carson FL, Hladik C *Histotechnology: A Self-Instructional Text* (3rd ed.)
American Society for Clinical Pathology Press [2009]. 362-363.

Copyright ©2012-2018 American MasterTech Scientific. All rights reserved.

No part of these pages may be used for any purpose other than personal use. Therefore, reproduction, modification, storage in a retrieval system or retransmission, in any form or by any means, for reasons other than personal use, is strictly prohibited without prior written permission.