

PRODUCT DATA SHEET



RABBIT ANTI-HUMAN PD-L1 MONOCLONAL ANTIBODY CAL10

CATALOG NUMBER:	RM200-001
DOCUMENT NUMBER:	IFU-259 Rev A_CAL10_11172017
VOLUME:	0.1 ml
INTENDED USE:	For Research Use Only. Not for use in diagnostic procedures.
CLONE:	CAL10
IMMUNOGEN:	Synthetic peptide derived from a region of the PD-L1 protein.
IG ISOTYPE:	Rabbit IgG1
TYPE:	Monoclonal
LABEL:	Unconjugated
ANTIGEN:	Peptide corresponding to region within human PD-L1
STOCK CONCENTRATION:	See vial
SPECIES REACTIVITY:	Human (tested)
CELLULAR LOCALIZATION:	Membranous
Manufacturer:	Calico Biolabs, Inc
APPLICATIONS:	Immunohistochemistry (IHC)- Formalin-fixed, paraffin-embedded tissues are suitable for use with this primary antibody.

STAINING PROTOCOL RECOMMENDATIONS: **Antibody Dilution:** If using the concentrate format of this product, dilute the antibody to 1:1800 to 1:2200 (0.25 ug/ml). The dilutions are estimates; actual results may differ because of variability in methods and protocols.

Antigen Retrieval: TRIS EDTA buffer, pH 8.0

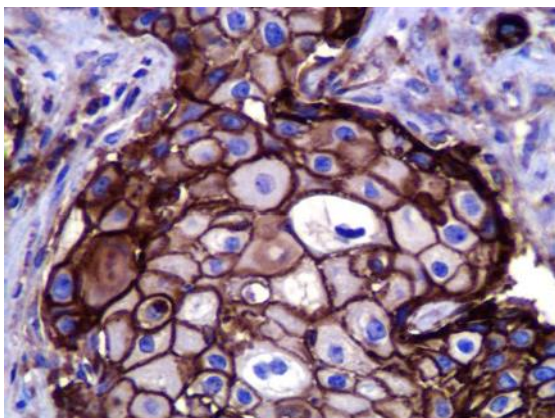
IHC POSITIVE CONTROL:	PD-L1 transfected HEK cell pellets, Non-small cell lung cancer, tonsil.
STORAGE & STABILITY:	Store at 2-8 degrees C
EXPIRATION DATE:	1 Year
TECHNICAL SUPPORT:	Email our team at ihctech@statlab.com or call (800) 442-3573
APPROVED DATE:	November, 17, 2017

PRECAUTIONS

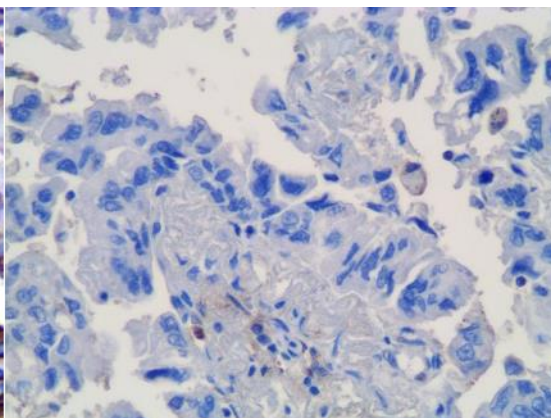
This antibody contains less than 0.1% sodium azide. Concentrations less than 0.1% are not reportable hazardous materials according to U.S. 29 CFR 1910.1200, OSHA Hazard communication and EC Directive 91/155/EC. Sodium azide (NaN₃) used as a preservative is toxic if ingested. Sodium azide may react with lead and copper plumbing to form highly explosive metal azides. Upon disposal, flush with large volumes of water to prevent azide build-up in plumbing. (Center for disease control, 1976, National Institute of Occupational Safety and Health, 1976). Specimens, before and after fixation and all materials exposed to them, should be handled as if capable of transmitting infection and disposed of with proper precautions. Never pipette reagents by mouth and avoid contacting the skin and mucous membranes with reagents and specimens. If reagents or specimens come in contact with sensitive areas, wash with copious amounts of water. Microbial contamination of reagents may result in an increase in nonspecific staining. Incubation times or temperatures other than those specified may give erroneous results. The user must validate any such change. The SDS is available.



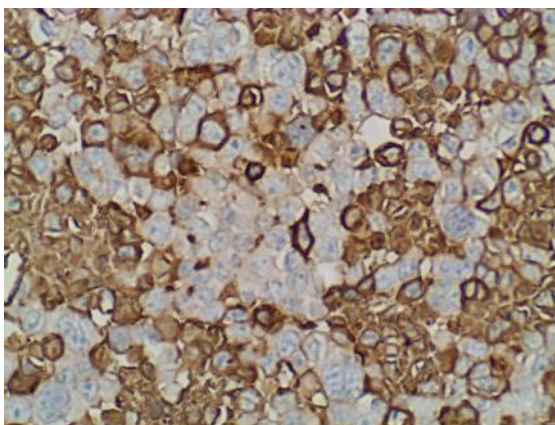
PRODUCT DATA SHEET



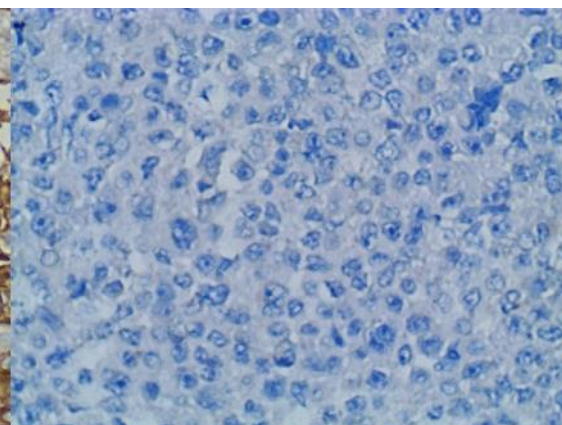
PD-L1 positive NSCLC



PD-L1 negative NSCLC



**PD-L1 Transfected HEK293 cells
(Positive Control)**



**PD-L2 Transfected HEK293 cells
(Negative Control)**

